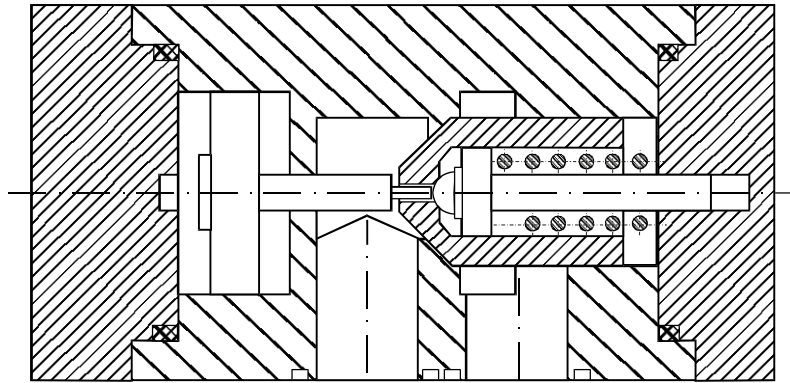
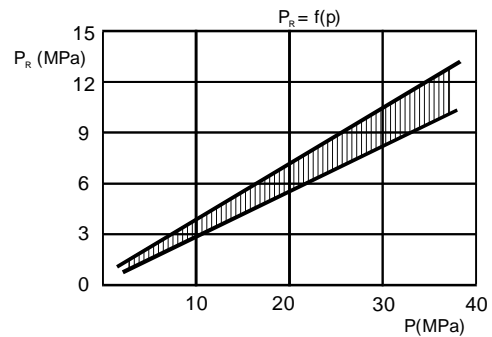
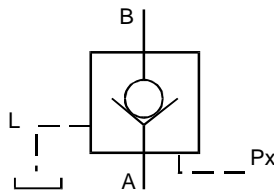


Controlled one-way valves RJV



Hydraulic diagram :



Brief description and function :

RJV is assigned for turning on or turning off of a hydraulic engine, or that an engine after turning off remained in the same level. According to a graphic mark RJV is directed from A towards B free flow. By flowing from B to A, a head body as well as a control valve are by a spring pushed to a yoke (corbel). The flowing is closed.

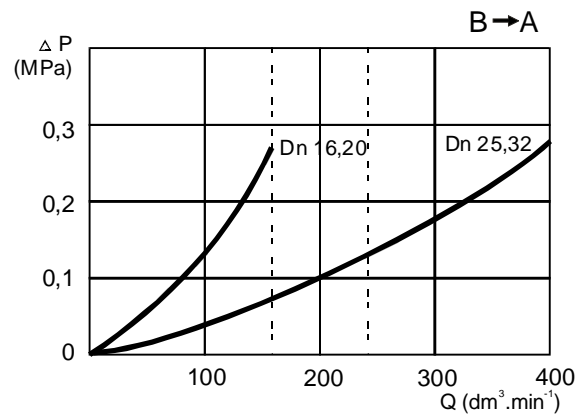
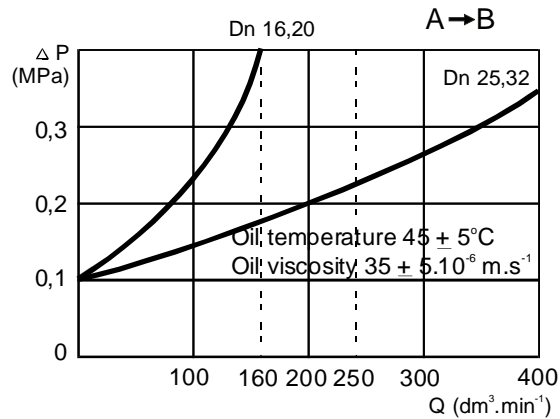
The operating pressure is acting on a piston, elevate a control valve and than also a head body. The direction from B towards A is opened.

RJV is used in opened circuits or closed circuits.

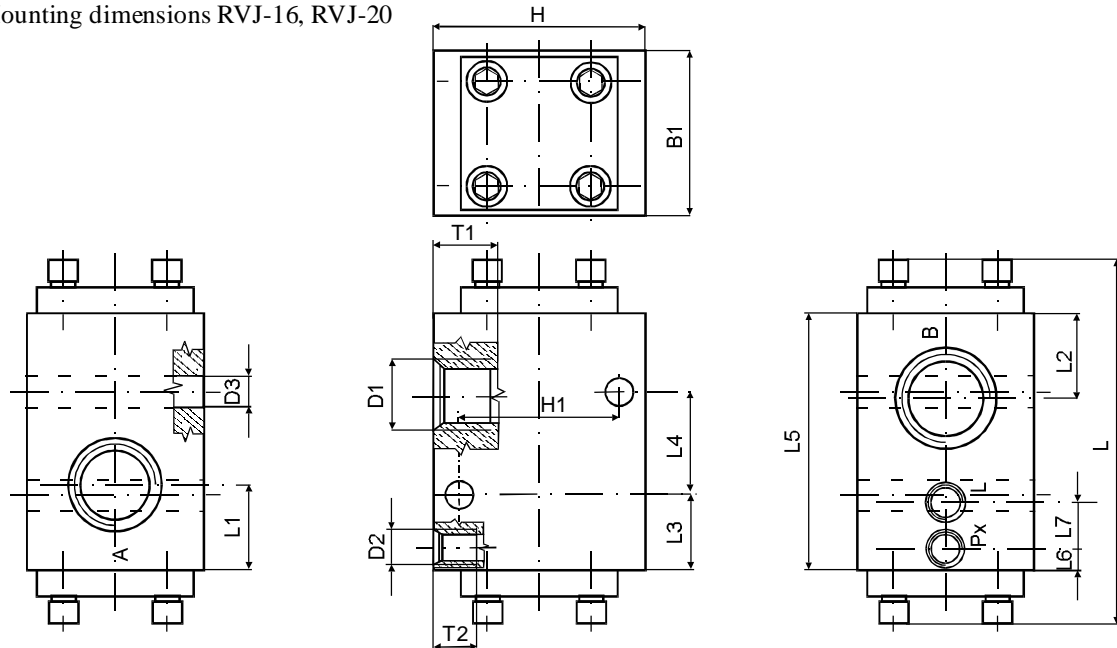
Technical data

Parameter	measurement	size			
		16	20	25	30
Nominal clarity	mm	16	20	25	30
Maximum pressure	Mpa	40			
Nominal pressure	Mpa	32			
Opening pressure	Mpa	max. 0,15			
Pressure loss	Mpa	0,8			
Maximum flow	dm ³ min ⁻¹	160	250	400	500
Nominal flow	dm ³ min ⁻¹	160	160	250	400
Kinematic viscosity	mm ² s ⁻¹	1500...10			
Working temperature	°C	-40 ÷ 80			
Ambient temperature	°C	-40 ÷ 80			
Filtration	µm	25			
Kind of working fluid		Mineral oil for hydraulic circuits			
Weight	kg	4		8	

Characteristic



Mounting dimensions RVJ-16, RVJ-20



Valve type marking	B1	B2	D1	D2	D3	H	H1	L	L1
RJV-16-101-x0	56	0	M27x2	M12x1,5	10,5	80	60	153	40
RJV-20-101-x0	56	0	M33x2	M12x1,5	10,5	80	60	153	40
	L2	L3	L4	L5	L6	L7	T1	T2	Weight (kg)
RJV-16-101-x0	30	45	25	100	10	21	17	13	4,0
RJV-20-101-x0	30	45	25	100	10	21	17	13	4,0